

Recommended spare part sets KAF®

For commissioning / continuous operation & strategical spares

- Please note this is only a general recommendation, which may have project related changes.
- Please ask for your detailed spare part quotation for your self-cleaning filter.
- After your definitions of spare packages, Krone will check if technical developments apply and always quote newest technical development.

- 2– 4 weeks
- 4– 8 weeks
- 10–16 weeks for special materials or versions

* Lead time depends on version, model and materials. Exact delivery time will be mentioned in quotation by Krone Filter Solutions.

** Dependent on filter operational stress/flush frequency depending on water quality.

*** If purchased together with 2–3 year operational spares the SET 2 and 3 can be reduced to 1 pcs.

**** Recommended number of strategical spare packages 30% of filter's in operation/min. 1 package. If purchased with 4–7** years operational spares package can be reduced by those positions.

Commissioning spares		
SET	Recommended quantity per filter	Lead time rating*
2	1	●
3 or 3A	1	●

2–3 years operation spares		
SET	Recommended quantity per filter	Lead time rating*
2	2	●
3 or 3A	2	●
5	1	●

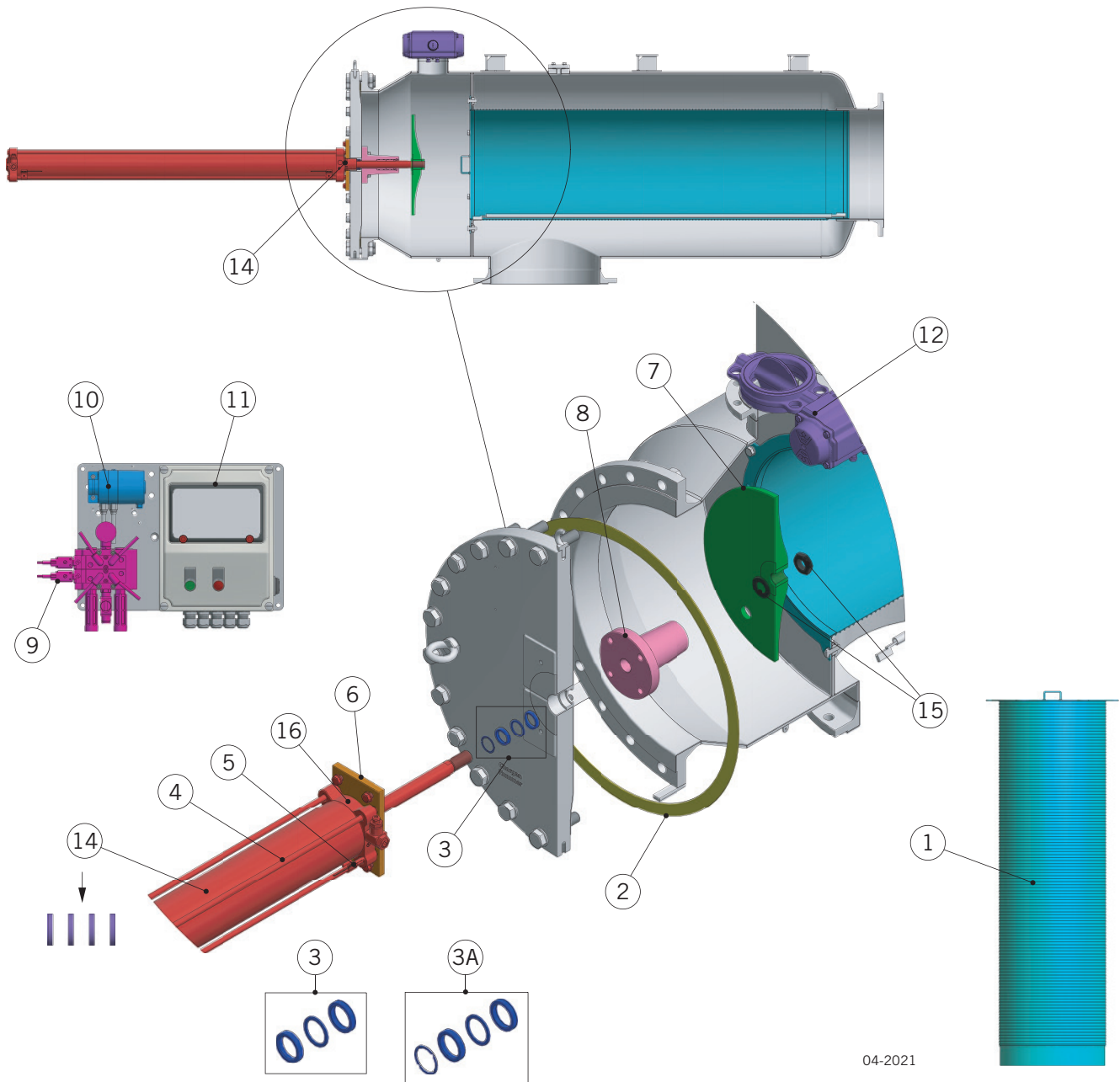
4–7** years operational spares		
SET	Recommended quantity per filter***	Lead time rating*
1	1	● ●
2	2	●
3 or 3A	3	●
5	1	●
7	1	● ●
8 (optional for filters >= DN500)	1	● ●
10	1	● ●
14 (or SET 4 optional)	1	●
4 (optional to SET 14)	1	● ●

Strategical spare package recommended purchase latest 1 year after START-UP****		
SET	Recommended quantity per filter	Lead time rating*
1	1	● ●
2	1	●
3 or 3A	1	●
4	1	● ●
5	1	●
7	1	● ●
8 (optional for filters >= DN500)	1	●
9	1	●
10	1	● ●
11	1	● ●
12	1	● ●

Krone Filter Solutions GmbH

Industriestrasse 19 | 28876 Oyten/Germany
 Phone +49 4207 98769-0 | Fax +49 4207 98769-27
 filter@krone-filter.com | www.krone-filter.com
 www.krone-filtershop24.com

KAF® spare part sets



04-2021

KAF® spare part sets

Set	Content	Set	Content
1	Insert, sealing (optional), set of bolts	9	Complete solenoid valve unit
2	Cover gasket	10	Differential pressure switch
3	Piston rod to cover sealing	11	Control unit/LCP with CPU
3A	Piston rod to cover sealing incl. Exhaust Air Disc	12	Flushing valve
4	Pneumatic cylinder, restrictors, set of bolts***	13	Tubes, adapter fittings
5	Set limit switches	14	Wearing parts set pneumatic cylinder ("air" repair package)**
6	Flange for pneumatic cylinder	15	Special washer & special fixing nut (for flushing disc)
7	Flushing disc, fixing nut, washer	16	Cylinder head & bearing unit pneumatic actuator**
8	Piston rod guide*		

* Installed as option on filters \geq DN 350; installed on all filters \geq DN 500

** Repair; not recommended for ATEX certified components

*** Recommended for ATEX component – complete with certificate