

Recommended spare part sets KAF®-G

For commissioning / continuous operation & strategical spares

- Please note this is only a general recommendation, which may have project related changes.
- Please ask for your detailed spare part quotation for your self-cleaning filter.
- After your definitions of spare packages, Krone will check if technical developments apply and always quote newest technical development

- 2– 4 weeks
- 4– 8 weeks
- 10–16 weeks for special materials or versions

* Lead time depends on version, model and materials. Exact delivery time will be mentioned in quotation by Krone Filter Solutions.

** Dependent on filter operational stress/flush frequency depending on water quality.

*** If purchased together with 2–3 year operational spares the SET 2, 3 and 17 can be reduced to 1 pcs.

**** Recommended number of strategical spare packages 30% of filter's in operation/min. 1 package. If purchased with 4–7** years operational spares package can be reduced by those positions.

Commissioning spares		
SET	Recommended quantity per filter	Lead time rating*
2	1	●
3	1	●
17	1	●

2–3 years operation spares		
SET	Recommended quantity per filter	Lead time rating*
2	2	●
3	2	●
5	1	●
15	1	●
17	1	●

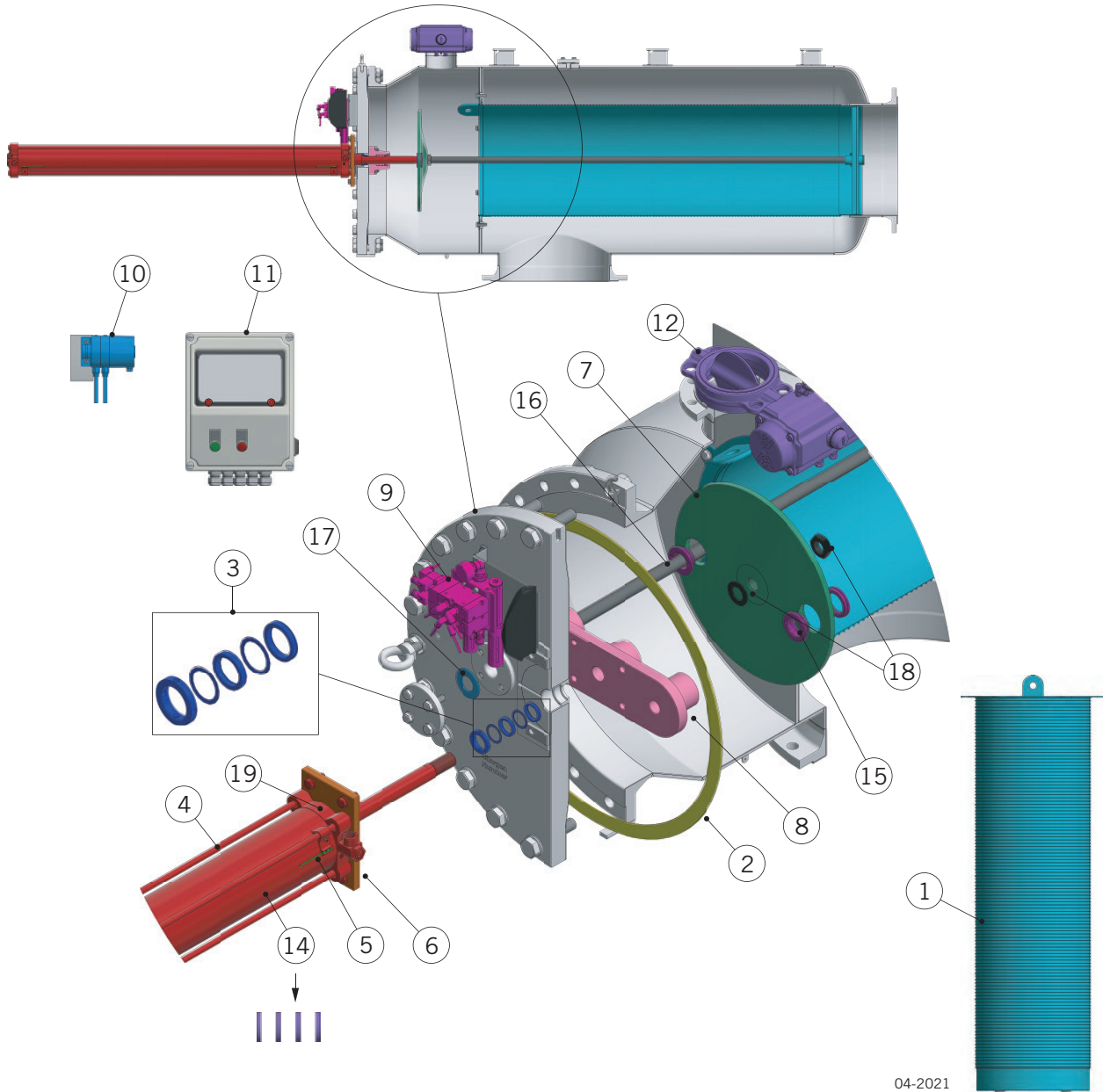
4–7** years operational spares		
SET	Recommended quantity per filter***	Lead time rating*
1	1	● ●
2	2	●
3	3	●
5	1	●
7	1	● ●
8	1	● ●
10	1	● ●
14 (or SET 4 optional)	1	●
4 (optional to SET 14)	1	● ●
15	1	●
17	2	●

Strategical spare package recommended purchase latest 1 year after START-UP****		
SET	Recommended quantity per filter	Lead time rating*
1	1	● ●
2	1	●
3	1	●
4	1	● ●
5	1	●
7	1	● ●
8	1	● ●
9	1	●
10	1	● ●
11	1	● ●
12	1	● ●
15	1	●
17	1	●

Krone Filter Solutions GmbH

Industriestrasse 19 | 28876 Oyten/Germany
 Phone +49 4207 98769-0 | Fax +49 4207 98769-27
 filter@krone-filter.com | www.krone-filter.com
 www.krone-filtershop24.com

KAF[®]-G spare part sets



04-2021

KAF[®]-G spare part sets

Set	Content
1	Insert, sealing (optional), set of bolts
2	Cover gasket
3	Piston rod to cover sealing/gasket
4	Pneumatic cylinder, restrictors, set of bolts**
5	Set limit switches
6	Flange for pneumatic cylinder
7	Flushing disc, fixing nut, special washer
8	Piston rod guide
9	Complete solenoid valve unit
10	Differential pressure switch

Set	Content
11	Control unit/LCP with CPU
12	Flushing valve
13	Tubes, adapter fittings
14	Wearing parts set pneumatic cylinder ("air" repair package)*
15	Bushings for flushing disc guide pipes
16	Guide rods for flushing disc incl. fixing
17	Flange seal for guide rods
18	Special washer & special fixing nut (for flushing disc)
19	Cylinder head & bearing unit pneumatic actuator*

* Repair; not recommended for ATEX certified components

** Recommended for ATEX component – complete with certificate