

# Application Report

KRONE FILTER SOLUTIONS GMBH  
Herbert-Ludwig-Str. 12  
28832 Achim / Germany  
Tel: +49 (0)4202 97 69 23  
Fax: +49 (0)4202 97 69 27

 **Krone Filter**  
SOLUTIONS IN FILTRATION

info@krone-filter.com  
www.krone-filter.com



## KAF

(selbstreinigender Filter / automatic Filter /  
backflush filter)

**Kunde / Customer:**

Power Plant in Egypt

**Aufgabenstellung /  
Scope of filtration  
Filtration of impurities:**

Filtration of raw Nil riverwater

**Verunreinigung durch /  
Filtration of:**

river water

**Durchsatz / Flowrate:  
Temperature design:  
Druck / Working press:**

1800-3300 m<sup>3</sup>/h  
0-65 °C  
2-4,5 bar

**Rohrleitung / Piping:**

DN/NW 24" CS unit with 6,4 mm rubberlining

**Filter:**

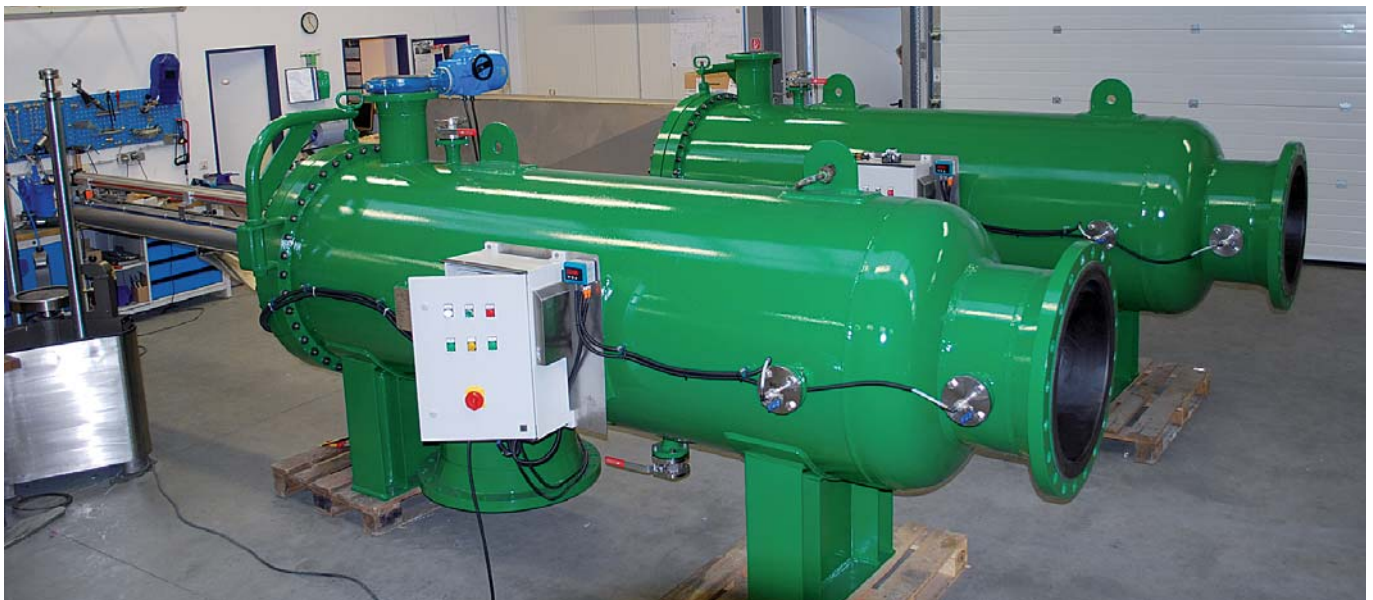
KAF Bernoulli 24" ANSI 150 lbs  
Carbon Steel with 6,4 mm rubberlining  
Design acc. ASME VIII Div. 1 with U-Stamp  
SPS Steuerung/Electronic control panel (PLC)

**Filterfeinheit / Filtration degree:**

0,5 mm

**REMARKS:**

2 pcs. With ASME U-Stamp, electric piston drive,  
6,4 mm rubberlining



# Application Report

KRONE FILTER SOLUTIONS GMBH  
Herbert-Ludwig-Str. 12  
28832 Achim / Germany  
Tel: +49 (0)4202 97 69 23  
Fax: +49 (0)4202 97 69 27

**Krone Filter**  
SOLUTIONS IN FILTRATION

info@krone-filter.com  
www.krone-filter.com

## KAF

(automatic Filter)



**Kunde / Customer:**

Stahlwerk / Steel Work

**Aufgabenstellung /  
Scope of filtration:**

Filtration von Kreislauf Kühlwasser  
Cooling water filtration

**Verunreinigung durch /  
Filtration of:**

Sinterreste  
Sintering coal

**Durchsatz / Flowrate:  
Temperature:  
Druck / Working press:**

150-270 m<sup>3</sup>/h  
0-80 °C  
8 bar

**Rohrleitung / Piping:**

DN/NW 150

**Filter:**

KAF Bernoulli DN 80 / NW 80 PN 16  
Gehäuse 1.4571 / Housing 316 Ti  
SPS Steuerung/Electronic control panel (PLC)

**Filterfeinheit / Filtration degree:**

200 micron



# Application Report

KRONE FILTER SOLUTIONS GMBH  
Herbert-Ludwig-Str. 12  
28832 Achim / Germany  
Tel: +49 (0)4202 97 69 23  
Fax: +49 (0)4202 97 69 27

 **Krone Filter**  
SOLUTIONS IN FILTRATION

info@krone-filter.com  
www.krone-filter.com

## KAF

(selbstreinigender Filter / automatic Filter /  
backflush filter)



**Kunde / Customer:**

Hersteller von Fussboden-Laminat-Platten

**Aufgabenstellung:**

Filtration von Kreislaufwasser aus Luftwäscher (Spanplatten und Laminatplatten werden geschnitten und die Abluft enthält große Mengen Stäube, Späne und Fasern. Diese werden mit Wasser im Luftwäscher gebunden).

**Verunreinigung durch:**

Laminatreste, Stäube und Fasern

**Durchsatz / Flowrate:**

15-20 m<sup>3</sup>/h

**Temperature:**

25-80 °C

**Druck / Working press:**

6 bar

**Rohrleitung / Piping:**

DN 80

**Filter:**

KAF Bernoulli DN 80 PN 16 Gehäuse 1.4571  
SPS Steuerung (Zeit und differenzdruckgesteuert)

**Filterfeinheit / Filtration degree:**

2 mm Lochblechsieb



# Application Report

KRONE FILTER SOLUTIONS GMBH  
Herbert-Ludwig-Str. 12  
28832 Achim / Germany  
Tel: +49 (0)4202 97 69 23  
Fax: +49 (0)4202 97 69 27

 **Krone Filter**  
SOLUTIONS IN FILTRATION

info@krone-filter.com  
www.krone-filter.com

## KAF

(2 units automatic Filter)



**Kunde / Customer:**

Laminate production

**Aufgabenstellung /  
Scope of filtration:**

Filtration von Kreislauf Kühlwasser  
Cooling water filtration

**Verunreinigung durch /  
Filtration of:**

Fasern aus Laminatproduktion  
Fibres in Laminate production / cooling water

**Durchsatz / Flowrate:  
Temperature:  
Druck / Working press:**

20-40 m<sup>3</sup>/h  
0-80 °C  
8 bar

**Rohrleitung / Piping:**

DN/NW 80

**Filter:**

KAF Bernoulli DN 80 / NW 80 PN 16  
Gehäuse 1.4571 / Housing 316 Ti  
SPS Steuerung/Electronic control panel (PLC)

**Filterfeinheit / Filtration degree:**

2mm / 2000 micron



# Application Report

KRONE FILTER SOLUTIONS GMBH  
Herbert-Ludwig-Str. 12  
28832 Achim / Germany  
Tel: +49 (0)4202 97 69 23  
Fax: +49 (0)4202 97 69 27

 **Krone Filter**  
SOLUTIONS IN FILTRATION

info@krone-filter.com  
www.krone-filter.com

## KAF

(selbstreinigender Filter / automatic Filter /  
backflush filter)



**Kunde / Customer:**

Biomasse Kraftwerk/Biomass Power Plant

**Aufgabenstellung /  
Scope of filtration  
Filtration of impurities:**

Filtration von Kühlturm Kreislauf Kühlwasser  
Cooling tower water filtration

**Verunreinigung durch /  
Filtration of:**

Offene Kühltürme/Impurities of open cooling towers

**Durchsatz / Flowrate:  
Temperature design:  
Druck / Working press:**

1800-3000 m<sup>3</sup>/h  
0-80 °C  
0,9-1,8 bar

**Rohrleitung / Piping:**

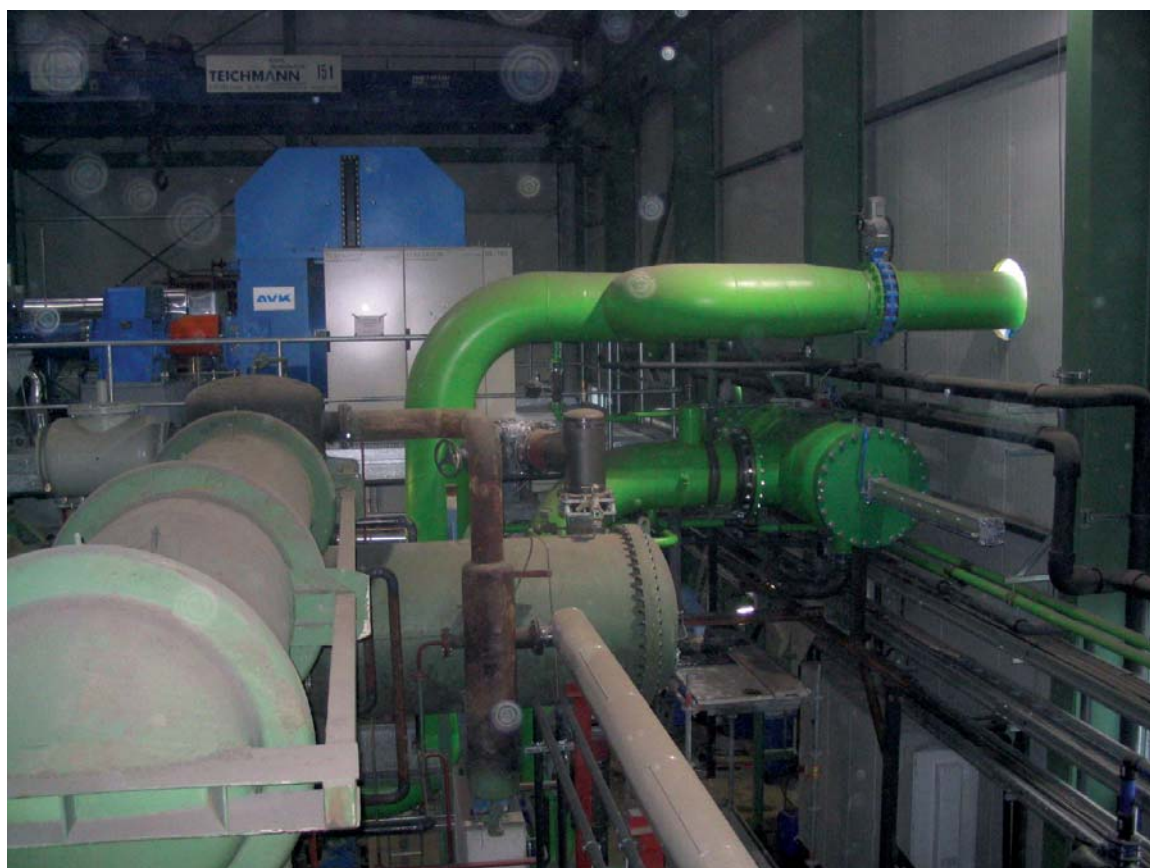
DN/NW 600/(24")

**Filter:**

KAF Bernoulli DN 600/NW 600 PN 10  
Gehäuse GFK/FRP/Housing FRP/GRP  
SPS Steuerung/Electronic control panel (PLC)

**Filterfeinheit / Filtration degree:**

1000 micron/1 mm



# Application Report

KRONE FILTER SOLUTIONS GMBH  
Herbert-Ludwig-Str. 12  
28832 Achim / Germany  
Tel: +49 (0)4202 97 69 23  
Fax: +49 (0)4202 97 69 27

 **Krone Filter**  
SOLUTIONS IN FILTRATION

info@krone-filter.com  
www.krone-filter.com

## KAF

(selbstreinigender Filter / automatic filter /  
backflush filter)



**Kunde / Customer:**

QAFCO fertilizer Qatar

**Aufgabenstellung /  
Scope of filtration  
Filtration of impurities:**

Chemical Industry

**Verunreinigung durch /  
Filtration of:**

raw seawater

**Durchsatz / Flowrate:  
Temperature design:  
Druck / Working press:**

800-1000 m<sup>3</sup>/h  
0-65 °C  
2-5,5 bar

**Rohrleitung / Piping:**

14" GRP

**Filter:**

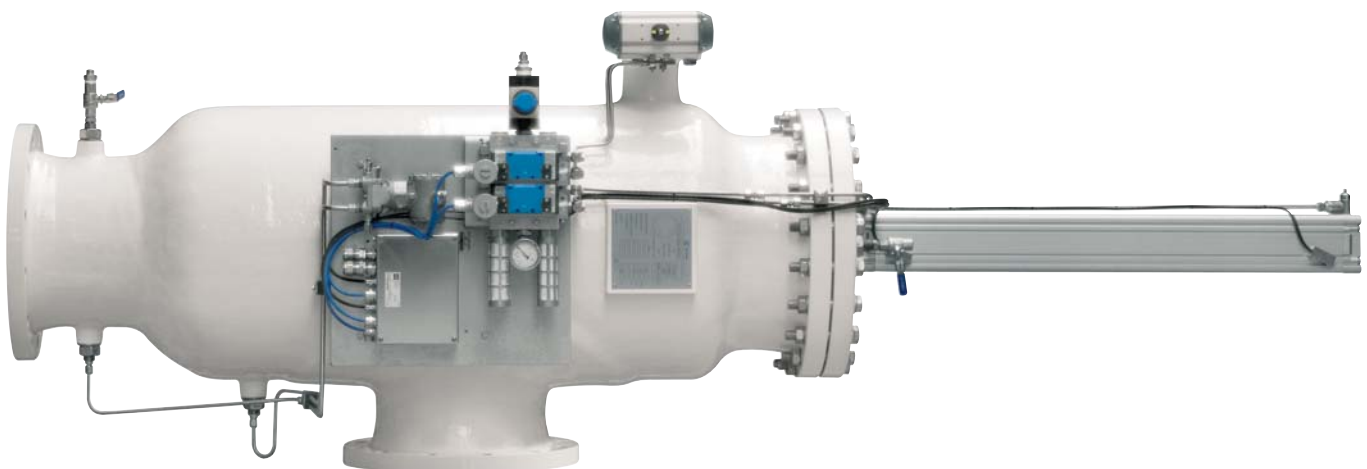
KAF Bernoulli GRP with ASME X approval

**Filterfeinheit / Filtration degree:**

1 mm

**REMARKS:**

Titanium insert and wetted parts, Eexd equipment



# Application Report

KRONE FILTER SOLUTIONS GMBH  
Herbert-Ludwig-Str. 12  
28832 Achim / Germany  
Tel: +49 (0)4202 97 69 23  
Fax: +49 (0)4202 97 69 27

 **Krone Filter**  
SOLUTIONS IN FILTRATION

info@krone-filter.com  
www.krone-filter.com



## KAF

(selbstreinigender Filter / automatic filter /  
backflush filter)

**Kunde / Customer:** largest chlor manufacturing company in the world

**Aufgabenstellung /  
Scope of filtration  
Filtration of impurities:** Chemical Industry sewage plant

**Verunreinigung durch /  
Filtration of:** sewage

**Durchsatz / Flowrate:  
Temperature design:  
Druck / Working press:** 200-300 m<sup>3</sup>/h  
0-65 °C  
2-5,5 bar

**Rohrleitung / Piping:** 8"

**Filter:** KAF Bernoulli GRP acc. ASME X  
SPS Steuerung/Electronic control panel (PLC)

**Filterfeinheit / Filtration degree:** 5 mm

**REMARKS:** Hastelloy or super duplex 1.4462 insert and wetted parts



# Application Report

KRONE FILTER SOLUTIONS GMBH  
Herbert-Ludwig-Str. 12  
28832 Achim / Germany  
Tel: +49 (0)4202 97 69 23  
Fax: +49 (0)4202 97 69 27

 **Krone Filter**  
SOLUTIONS IN FILTRATION

info@krone-filter.com  
www.krone-filter.com



## KAF

(selbstreinigender Filter / automatic Filter / backflush filter)

<b>Kunde / Customer:</b>	Brauerei Abwasser Recycling
<b>Aufgabenstellung:</b>	Filtration von Abwässern einer Brauerei
<b>Verunreinigung durch:</b>	Etiketten, Korkenreste, Metall Abrieb, Kunststoffpartikel sowie Reste von Zigarettenfiltern
<b>Durchsatz / Flowrate:</b>	60-90 m <sup>3</sup> /h
<b>Temperature:</b>	25-60 °C
<b>Druck / Working press:</b>	1,8-4 bar
<b>Rohrleitung / Piping:</b>	DN 80 aus PVC
<b>Filter:</b>	KAF Bernoulli DN 80 PN 10/GFK (Gehäusewerkstoff) SPS Steuerung (Zeit und differenzdruckgesteuert)
<b>Filterfeinheit / Filtration degree:</b>	300 µm (0,3 mm) Kantenspaltsieb





# Application Report

KRONE FILTER SOLUTIONS GMBH  
Herbert-Ludwig-Str. 12  
28832 Achim / Germany  
Tel: +49 (0)4202 97 69 23  
Fax: +49 (0)4202 97 69 27

 **Krone Filter**  
SOLUTIONS IN FILTRATION

info@krone-filter.com  
www.krone-filter.com



## KAF

(selbstreinigender Filter / automatic Filter /  
backflush filter)

**Kunde / Customer:**

Biomasse Kraftwerk/Biomass Power Plant

**Aufgabenstellung /  
Scope of filtration  
Filtration of impurities:**

Filtration von Kühlturm Kreislauf Kühlwasser  
Cooling tower water filtration

**Verunreinigung durch /  
Filtration of:**

Offene Kühltürme  
Impurities of open cooling towers

**Durchsatz / Flowrate:  
Temperature design:  
Druck / Working press:**

1800-3000 m<sup>3</sup>/h  
0-80 °C  
0,9-1,8 bar

**Rohrleitung / Piping:**

DN/NW 600/(24")

**Filter:**

KAF Bernoulli DN 600/NW 600 PN  
Gehäuse GFK/FRP/Housing FRP/GRP  
SPS Steuerung/Electronic control panel (PLC)

**Filterfeinheit / Filtration degree:**

1000 micron/1 mm



# Application Report

KRONE FILTER SOLUTIONS GMBH  
Herbert-Ludwig-Str. 12  
28832 Achim / Germany  
Tel: +49 (0)4202 97 69 23  
Fax: +49 (0)4202 97 69 27

 **Krone Filter**  
SOLUTIONS IN FILTRATION

info@krone-filter.com  
www.krone-filter.com



## KAF

(selbstreinigender Filter / automatic Filter /  
backflush filter)

**Kunde / Customer:**

Power Plant in north Africa

**Aufgabenstellung /  
Scope of filtration  
Filtration of impurities:**

Filtration of raw seawater

**Verunreinigung durch /  
Filtration of:**

river water

**Durchsatz / Flowrate:  
Temperature design:  
Druck / Working press:**

1000-1600 m<sup>3</sup>/h  
0-65 °C  
5,2-6,5 bar

**Rohrleitung / Piping:**

DN/NW 16" CS unit with 6,4 mm rubberlining

**Filter:**

4 x KAF Bernoulli 16" ANSI 150 lbs  
Carbon Steel with 6,4 mm rubberlining  
Design acc. ASME VIII Div. 1 with U-Stamp  
SPS Steuerung/Electronic control panel (PLC)

**Filterfeinheit / Filtration degree:**

0,5 mm

**REMARKS:**

electric actuator, ASME U-Stamp



# Application Report

KRONE FILTER SOLUTIONS GMBH  
Herbert-Ludwig-Str. 12  
28832 Achim / Germany  
Tel: +49 (0)4202 97 69 23  
Fax: +49 (0)4202 97 69 27

 **Krone Filter**  
SOLUTIONS IN FILTRATION

info@krone-filter.com  
www.krone-filter.com



## KAF

(selbstreinigender Filter / automatic filter /  
backflush filter)

**Kunde / Customer:**

Chemical plant in the Netherlands

**Aufgabenstellung /  
Scope of filtration  
Filtration of impurities:**

Filtration of raw riverwater

**Verunreinigung durch /  
Filtration of:**

brackish river water

**Durchsatz / Flowrate:  
Temperature design:  
Druck / Working press:**

1800-4600 m<sup>3</sup>/h  
0-65 °C  
5-6,5 bar

**Rohrleitung / Piping:**

DN/NW 24" GRP unit

**Filter:**

KAF Bernoulli 24" ANSI 150 lbs  
SPS Steuerung/Electronic control panel (PLC)

**Filterfeinheit / Filtration degree:**

0,2 mm

**REMARKS:**

vertical mount ring



# Application Report

KRONE FILTER SOLUTIONS GMBH  
Herbert-Ludwig-Str. 12  
28832 Achim / Germany  
Tel: +49 (0)4202 97 69 23  
Fax: +49 (0)4202 97 69 27

 **Krone Filter**  
SOLUTIONS IN FILTRATION

info@krone-filter.com  
www.krone-filter.com



## KAF

(selbstreinigender Filter / automatic Filter /  
backflush filter)

**Kunde / Customer:**

Power Plant UK

**Aufgabenstellung /  
Scope of filtration  
Filtration of impurities:**

Filtration of raw riverwater

**Verunreinigung durch /  
Filtration of:**

river water

**Durchsatz / Flowrate:  
Temperature design:  
Druck / Working press:**

800-1600 m<sup>3</sup>/h  
0-65 °C  
2-6,5 bar

**Rohrleitung / Piping:**

DN/NW 16" CS unit with 4 mm rubberlining

**Filter:**

KAF Bernoulli 16" ANSI 150 lbs  
Carbon Steel with 6,4 mm rubberlining  
Design acc. ASME VIII Div. 1 with U-Stamp  
SPS Steuerung/Electronic control panel (PLC)

**Filterfeinheit / Filtration degree:**

0,5 mm

**REMARKS:**

2 pcs. With ASME U-Stamp



# Application Report

KRONE FILTER SOLUTIONS GMBH  
Herbert-Ludwig-Str. 12  
28832 Achim / Germany  
Tel: +49 (0)4202 97 69 23  
Fax: +49 (0)4202 97 69 27

 **Krone Filter**  
SOLUTIONS IN FILTRATION

info@krone-filter.com  
www.krone-filter.com



## KAF

(selbstreinigender Filter / automatic Filter /  
backflush filter)

**Kunde / Customer:**

Power Plant UK

**Aufgabenstellung /  
Scope of filtration  
Filtration of impurities:**

Filtration of raw riverwater

**Verunreinigung durch /  
Filtration of:**

river water

**Durchsatz / Flowrate:  
Temperature design:  
Druck / Working press:**

800-1400 m<sup>3</sup>/h  
0-65 °C  
6-8 bar

**Rohrleitung / Piping:**

DN/NW 16" CS unit with 4 mm rubberlining

**Filter:**

KAF Bernoulli 16" ANSI 150 lbs  
Carbon Steel with 6,4 mm rubberlining  
Design acc. ASME VIII Div. 1 with U-Stamp  
SPS Steuerung/Electronic control panel (PLC)

**Filterfeinheit / Filtration degree:**

1 mm



# Application Report

KRONE FILTER SOLUTIONS GMBH  
Herbert-Ludwig-Str. 12  
28832 Achim / Germany  
Tel: +49 (0)4202 97 69 23  
Fax: +49 (0)4202 97 69 27

 **Krone Filter**  
SOLUTIONS IN FILTRATION

info@krone-filter.com  
www.krone-filter.com



## KAF

(selbstreinigender Filter / automatic filter /  
backflush filter)

**Kunde / Customer:**

LPG Transport Vessels

**Aufgabenstellung /  
Scope of filtration  
Filtration of impurities:**

Filtration of raw seawater

**Verunreinigung durch /  
Filtration of:**

seawater

**Durchsatz / Flowrate:  
Temperature design:  
Druck / Working press:**

10 x 350-400 m<sup>3</sup>/h  
0-65 °C  
2-5,5 bar

**Rohrleitung / Piping:**

200 JIS CS (DN 200) unit with 4 mm rubberlining

**Filter:**

KAF Bernoulli 200 JIS (DN 200)  
Carbon Steel with 6,4 mm rubberlining  
Design acc. PED with Llyods and DNV Inspection  
SPS Steuerung/Electronic control panel (PLC)

**Filterfeinheit / Filtration degree:**

1 mm

**REMARKS:**

10 units, Llyods/DNV approval, Exm / Eexia equipment



# Application Report

KRONE FILTER SOLUTIONS GMBH  
Herbert-Ludwig-Str. 12  
28832 Achim / Germany  
Tel: +49 (0)4202 97 69 23  
Fax: +49 (0)4202 97 69 27

 **Krone Filter**  
SOLUTIONS IN FILTRATION

info@krone-filter.com  
www.krone-filter.com

## KAF

(selbstreinigender Filter / automatic filter /  
backflush filter)



**Kunde / Customer:**

Power Plant in Africa

**Aufgabenstellung /  
Scope of filtration  
Filtration of impurities:**

Filtration of raw riverwater

**Verunreinigung durch /  
Filtration of:**

River water

**Durchsatz / Flowrate:  
Temperature design:  
Druck / Working press:**

1200-1400 m<sup>3</sup>/h  
0-65 °C  
6,5 bar

**Rohrleitung / Piping:**

DN/NW 16" CS unit with 6,4 mm rubberlining

**Filter:**

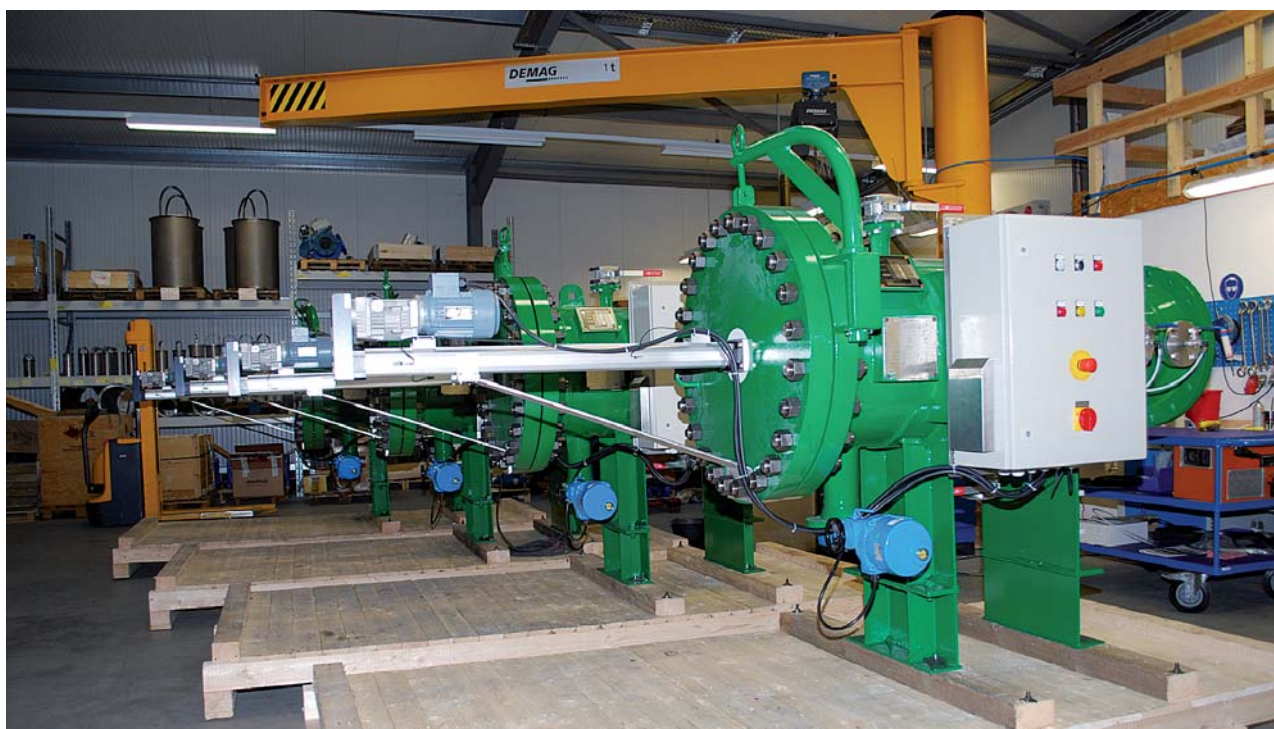
4 x KAF Bernoulli 16" ANSI 150 lbs  
Carbon Steel with 6,4 mm rubberlining  
Design acc. ASME VIII Div. 1 with U-Stamp  
SPS Steuerung/Electronic control panel (PLC)

**Filterfeinheit / Filtration degree:**

0,5 mm

**REMARKS:**

4 pcs. With ASME U-Stamp



# Application Report

KRONE FILTER SOLUTIONS GMBH  
Herbert-Ludwig-Str. 12  
28832 Achim / Germany  
Tel: +49 (0)4202 97 69 23  
Fax: +49 (0)4202 97 69 27

 **Krone Filter**  
SOLUTIONS IN FILTRATION

info@krone-filter.com  
www.krone-filter.com

## KAF

(selbstreinigender Filter / automatic filter /  
backflush filter)



**Kunde / Customer:**

Messaieed, Qatar

**Aufgabenstellung /  
Scope of filtration  
Filtration of impurities:**

Filtration of raw seawater,  
PHE protection

**Verunreinigung durch /  
Filtration of:**

Seewasser/  
seawater

**Durchsatz / Flowrate:  
Temperature design:  
Druck / Working press:**

80-120 m<sup>3</sup>/h  
0-65 °C  
8 bar

**Rohrleitung / Piping:**

4" GFK/ GRP

**Filter:**

2 x KAF Bernoulli 4" ANSI 150 lbs,  
SPS Steuerung/Electronic control panel (PLC)

**Filterfeinheit / Filtration degree:**

0,2 mm

**REMARKS:**

Vertical mount ring, duplex insert 1.4539, 4-20 mA Transmitter





# Application Report

KRONE FILTER SOLUTIONS GMBH  
Herbert-Ludwig-Str. 12  
28832 Achim / Germany  
Tel: +49 (0)4202 97 69 23  
Fax: +49 (0)4202 97 69 27

 **Krone Filter**  
SOLUTIONS IN FILTRATION

info@krone-filter.com  
www.krone-filter.com

## KAF

(selbstreinigender Filter / automatic filter /  
backflush filter)



**Kunde / Customer:**

Ship for dredging (Dubai the Palm)

**Aufgabenstellung /  
Scope of filtration  
Filtration of impurities:**

Filtration of raw seawater, PHE protection

**Verunreinigung durch /  
Filtration of:**

seawater

**Durchsatz / Flowrate:  
Temperature design:  
Druck / Working press:**

80 m<sup>3</sup>/h  
0-65 °C  
8,5 bar

**Rohrleitung / Piping:**

DN/NW 4" GRP unit

**Filter:**

KAF Bernoulli 4" ANSI 150 lbs  
SPS Steuerung/Electronic control panel (PLC)

**Filterfeinheit / Filtration degree:**

0,2 mm

**REMARKS:**

vertical mount ring



# Application Report

KRONE FILTER SOLUTIONS GMBH  
Herbert-Ludwig-Str. 12  
28832 Achim / Germany  
Tel: +49 (0)4202 97 69 23  
Fax: +49 (0)4202 97 69 27

**Krone Filter**  
SOLUTIONS IN FILTRATION

info@krone-filter.com  
www.krone-filter.com



## KAF

(selbstreinigender Filter / automatic filter / backflush filter)

**Kunde / Customer:**

REVERSE OSMOSIS DESALINISATION PLANT  
Kingdom of Saudi Arabia

**Aufgabenstellung /  
Scope of filtration  
Filtration of impurities:**

Filtration of raw seawater

**Verunreinigung durch /  
Filtration of:**

sea weeds, jelly fish ect.

**Durchsatz / Flowrate:  
Temperature design:  
Druck / Working press:**

3 x 3500-5000 m<sup>3</sup>/h  
0-50 °C  
0,4- 0,7 bar

**Rohrleitung / Piping:**

24" ANSI 150 lbs, 3 x 24" (DN600) in GRP

**Filter:**

3 x KAF Bernoulli 24" ANSI 150 lbs  
SPS Steuerung / Electronic control panel Siemens S7-200

**Filterfeinheit / Filtration degree:**

1 mm, 5 mm

**REMARKS:**

acc. ASME X, 3 units, Siemens S7-200 control



# Application Report

KRONE FILTER SOLUTIONS GMBH  
Herbert-Ludwig-Str. 12  
28832 Achim / Germany  
Tel: +49 (0)4202 97 69 23  
Fax: +49 (0)4202 97 69 27

**Krone Filter**  
SOLUTIONS IN FILTRATION

info@krone-filter.com  
www.krone-filter.com



## KAF

(selbstreinigender Filter / automatic filter /  
backflush filter)

**Kunde / Customer:**

LNG Regasification Plant

**Aufgabenstellung /  
Scope of filtration  
Filtration of impurities:**

Filtration of raw seawater

**Verunreinigung durch /  
Filtration of:**

seawater

**Durchsatz / Flowrate:  
Temperature design:  
Druck / Working press:**

3 x 3500-5000 m<sup>3</sup>/h  
0-65 °C  
2-5,5 bar

**Rohrleitung / Piping:**

DN/NW 24" CS unit with 4 mm rubberlining

**Filter:**

KAF Bernoulli 24" ANSI 150 lbs  
Carbon Steel with 6,4 mm rubberlining  
Design acc. PED with Llyods and DNV Inspection  
Electronic control panel (PLC)

**Filterfeinheit / Filtration degree:**

1 mm

**REMARKS:**

3 units, Llyods/DNV approval, Eexm / Eexia equipment



# Application Report

KRONE FILTER SOLUTIONS GMBH  
Herbert-Ludwig-Str. 12  
28832 Achim / Germany  
Tel: +49 (0)4202 97 69 23  
Fax: +49 (0)4202 97 69 27

 **Krone Filter**  
SOLUTIONS IN FILTRATION

info@krone-filter.com  
www.krone-filter.com



## KAF

(selbstreinigender Filter / automatic Filter /  
backflush filter)

**Kunde / Customer:**

Power Plant in Egypt

**Aufgabenstellung /  
Scope of filtration  
Filtration of impurities:**

Filtration of raw Nil riverwater

**Verunreinigung durch /  
Filtration of:**

river water

**Durchsatz / Flowrate:  
Temperature design:  
Druck / Working press:**

1800-3300 m<sup>3</sup>/h  
0-65 °C  
2-4,5 bar

**Rohrleitung / Piping:**

DN/NW 24" CS unit with 6,4 mm rubberlining

**Filter:**

KAF Bernoulli 24" ANSI 150 lbs  
Carbon Steel with 6,4 mm rubberlining  
Design acc. ASME VIII Div. 1 with U-Stamp  
SPS Steuerung/Electronic control panel (PLC)

**Filterfeinheit / Filtration degree:**

0,5 mm

**REMARKS:**

2 pcs. With ASME U-Stamp, electric piston drive,  
6,4 mm rubberlining

