



Example:  
8-fold bag filter  
KMF-M8 with  
quick-release  
fastener

# KBF-M

Multi-bag-filter

PN 4-16  
DN 65-300  
ANSI 3-12"



ISO 9001:2015

## Application areas

The KBF filter is used for the filtration of liquid media in industrial applications. Alternatively, the filter can be fitted with bags or a strainer insert. The filters are not approved for gases.



## Brief description and function

KBF series bag filters are available in 1.4301 (SS304) and 1.4401/1.4408 (SS316) stainless versions. The filter consists of a filter vessel, foot frame, strainer support, down-holding device and, optionally, the filter bag.

The medium enters the filter vessel through the side inlet and flows through a filter bag that is reinforced by a strainer support, from the inside to the outside. In addition to the recess and the down-holding device, the strainer support ensures that the filter bag is properly seated (Pict. 1).

### Notice:

The compatibility between medium and vessel or sealing material is the responsibility of the operator.

The design of the pressure vessel is based on a quasi-static operation (load cycle number  $\leq 1000$  according to AD 2000 Merkblatt S1, section 1.4). Max. Differential pressure inlet - outlet 2 bar.

## Installation

The filter is installed in pipes by flange connections. Ensure that the filter is installed in a mechanically stress-free manner without additional loads. The medium to be filtered must enter the filter vessel through the upper flange. Incorrect installation can cause filter malfunctions and damage the filter cartridge.

**Attention:** Since this is a pressure vessel, make absolutely sure that the filter is depressurized before starting maintenance tasks. Comply with the safety and accident prevention guidelines required for the medium.

## Commissioning/operating instructions

1. Slowly open the inlet/outlet valves.
2. Slowly open\* the venting device in the cover until liquid escapes (in case of hazardous liquids, according to the data sheet for hazardous substances and only using protective equipment or additional vent lines).
3. Replace the filter bag.
4. Close the venting device.
5. Filter is ready for operation.

## Cleaning (quick guide)

**Attention:** Since this is a pressure vessel, make absolutely sure that the vessel is depressurized before starting maintenance tasks. Comply with the safety and accident prevention guidelines required for the medium.

1. Depressurize the filter by using the venting or draining device (Pict. 2) (See filter documentation).
2. Loosen the vessel cover bolting or quick opening device and remove the cover.\*
3. Drain the filter by using the draining device until the fill level is at least just below strainer support.
4. Pull out the strainer insert with the filter bag upwards off the filter vessel. Replace the filter bag.
5. When re-assembling the parts, make sure that the sealing elements are intact; they must be replaced if necessary.
6. In case the medium or operating conditions are changed, a conformity assessment according to PED EN 2014/68/EU must be carried out.

\* For quick-release fasteners, observe the operating instructions supplied.

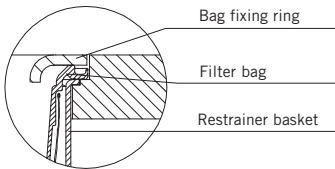
## Technical data

Technical data		
	Standard version	Special versions or optional extras
Filter insert	Filter bag with strainer support	Cleanable strainer insert with stainless steel mesh
Filter mesh	All off-the-shelf bags 0.8–2,000 µm	Strainer insert 5–2,000 µm
Filter cap	Cover with eye bolts	Quick-release fastener
Venting device	Screw/plug	Ball valve
Draining device	Screw/plug	Ball valve
Connection	Threaded sockets	Flange reducer, welded-on flange
<b>Materials</b>		
Housing and cover	1.4301/SS304/A2	1.4401/SS316/A4
Strainer support	1.4301/SS304/A2	1.4401/SS316/A4
Down-holding device	1.4301/SS304/A2	1.4401/SS316/A4
Cover seal	O-Ring: NBR	FPM, EPDM, PTFE
Eye bolt	1.4301/SS304/A2	–
Ring nut	1.4301/SS304/A2	–
Venting device	1.4301/SS304/A2	1.4401/SS316/A4
Draining device	1.4301/SS304/A2	1.4401/SS316/A4
<b>Differential pressure display/cleaning display</b>	Connections available	Visual, electrical
<b>Surface interior</b>		
Steel housing	Glass bead blasted	Electropolished
<b>Surface exterior</b>		
Steel housing	Glass bead blasted	Electropolished

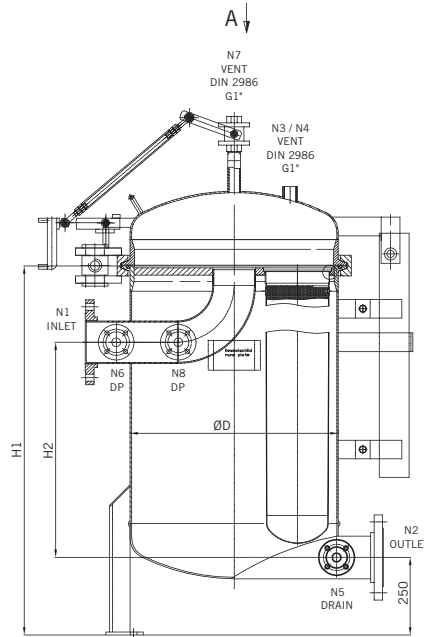
## Accessories

We produce and deliver additional design and material variants on request.  
We solicit your request.

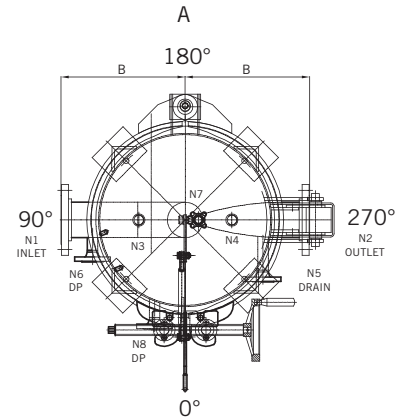
# Technical data and dimensions



Pict. 1



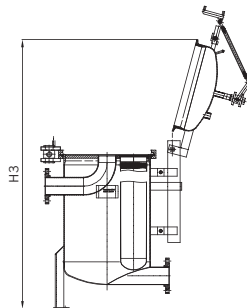
Pict. 2



Pict. 3

<b>KRÖNEFILTER.com</b>	
Bau Nr. / comp. no.:	
Type:	KBF
min./max. zul. Druck (PS) / min./max. pressure (PS):	10 bar
Prüfdruck / test pressure:	13 bar
min./max. zul. Temperatur (TS) / min./max. temperature (TS):	0 60 °C
Volumen / volume:	L
Baujahr / year of construction:	2017
Krone Filter Solutions GmbH Industriestraße 19 48876 Oytten (Germany) Tel: +49 (0) 4207 98 769-0 Fax: +49 (0) 4207 98 769-27 www.krone-filter.com	

Pict. 4: Type plate example



Pict. 5

Modell	Flow rate (m <sup>3</sup> /HF)	N1/N2 Inlet/Outlet	N3/N4/N7 Venting	N5 Draining	N6/N8 DP (Differential pressure)	ØD mm	H1 mm	H2 mm	H3 mm	B mm
<b>KBF-M3</b>	120	DN 80 EN 1092-1 11 PN 6-16/ 3" ANSI B 16.5 Class 150# RF *	G1" - DIN2986	DN 25 PN 16 - DIN EN 1092-1/11B		458	920	500	1.670	350
<b>KBF-M4</b>	160	DN 100 EN 1092-1 11 PN 6-16/ 4" ANSI B 16.5 Class 150# RF *	G1" - DIN2986	DN 25 PN 16 - DIN EN 1092-1/11B		558	926	508	1.780	400
<b>KBF-M5</b>	200	DN 125 EN 1092-1 11 PN 6-16/ 5" ANSI B 16.5 Class 150# RF *	G1" - DIN2986	DN 25 PN 16 - DIN EN 1092-1/11B		608	930	508	1.830	425
<b>KBF-M6</b>	240	DN 150 EN 1092-1 11 PN 6-16/ 6" ANSI B 16.5 Class 150# RF *	G1" - DIN2986	DN 25 PN 16 - DIN EN 1092-1/11B		658	935	508	1.890	450
<b>KBF-M8</b>	320	DN 200 EN 1092-1 11 PN 6-16/ 8" ANSI B 16.5 Class 150# RF *	G1" - DIN2986	DN 25 PN 16 - DIN EN 1092-1/11B		760	1.016	482	2.050	500
<b>KBF-M10</b>	400	DN 250 EN 1092-1 11 PN 6-16/ 10" ANSI B 16.5 Class 150# RF *	G1" - DIN2986	DN 25 PN 16 - DIN EN 1092-1/11B		912	1.102	483	2.300	575
<b>KBF-M12</b>	480	DN 300 EN 1092-1 11 PN 6-16/ 12" ANSI B 16.5 Class 150# RF *	G1" - DIN2986	DN 25 PN 16 - DIN EN 1092-1/11B		962	1.102	483	2.350	620

\* other flange standards possible



# KBF-M Multi-bag filter



Pict. 6



Pict. 7



Pict. 8



Pict. 9



**Krone Filter Solutions GmbH**

Industriestrasse 19 | 28876 Oyten/Germany  
Phone +49 4207 98769-0 | Fax +49 4207 98769-27  
[filter@krone-filter.com](mailto:filter@krone-filter.com) | [www.krone-filter.com](http://www.krone-filter.com)  
[www.shop.krone-filter.com](http://www.shop.krone-filter.com)

  
**KRONEFILTER<sup>®</sup>.COM**  
SOLUTIONS IN FILTRATION